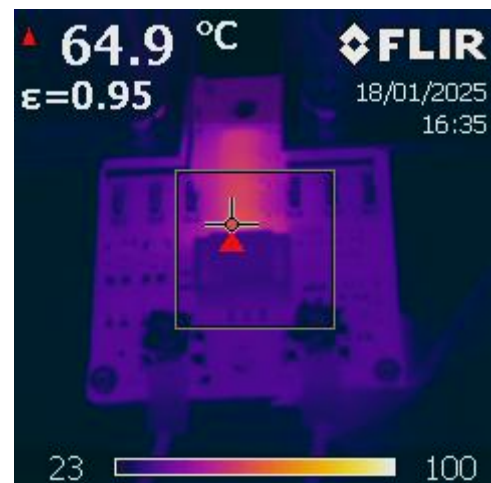
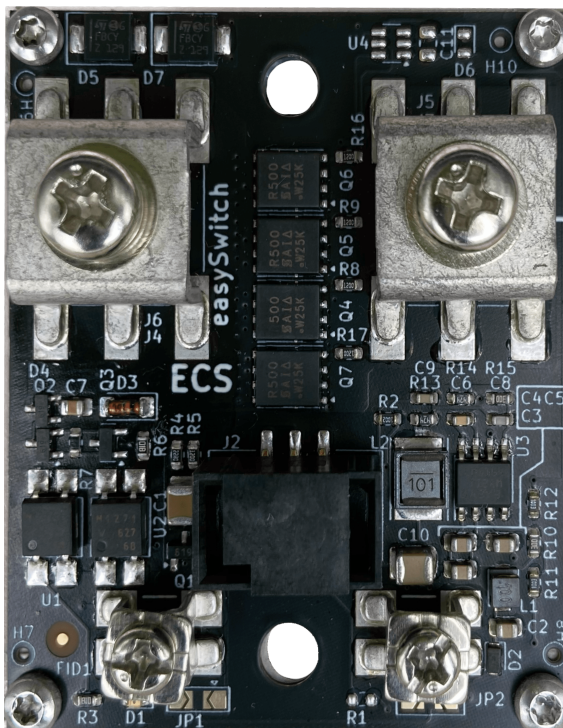




SSR - elektronisches Relais: easySwitch M

This electronic relay enables the simple switching of high DC currents. By consistently reducing the on-resistance, a heat sink is no longer required and the efficiency of your system is significantly increased. This saves costs, space and installation time. With the help of the additional ribbon cable connection, many relays can be connected with very little wiring effort. The larger control voltage range enables simpler control in 48V systems. Due to the significantly reduced power consumption compared to other manufacturers, this SSR is also ideal for battery operation. The SSR is coated with a protective varnish to protect it from environmental influences and condensation.

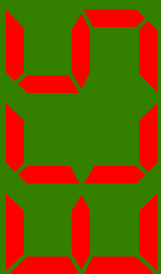


Made in Germany



www.ecs-online.org
mail@ecs-online.org
+49 (0) 6507 9989955

ECS Falko Jahn e.K
Am Wenigerflur 14
54498 Piesport



Features:

- Very low on resistance (down to 0,15 mΩ)
- No heat sink required
- High efficiency
- Currents up to 150 A
- Wide control voltage range up to 60 V
- Very low power consumption
- Additional ribbon cable connection to allow quick installation