

Switching Regulator IC series

Capacitor Calculation for Buck converter IC

This application note explains the calculation of external capacitor value for buck converter IC circuit.

Buck converter

Figure 1 is the basic circuit of buck converter. When switching element Q_1 is ON, current flows from V_{IN} through the coil L and charges the output smoothing capacitor C_O , and the output current I_O is supplied. The current which flows into the coil L at this time induces a magnetic field, and electric energy is transformed into magnetic energy and accumulated for storage.

When switching element Q_1 is OFF, free-wheeling diode D turns ON and energy stored in L is then released to the output side.

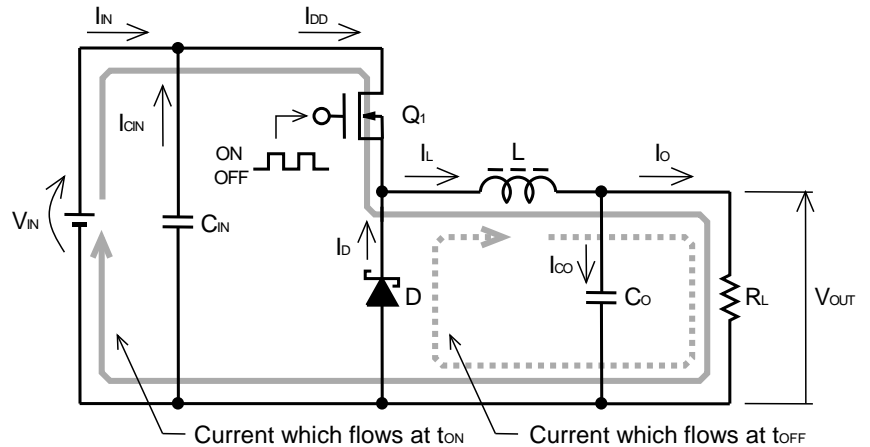


Figure 1. Basic buck converter circuit

Calculation of Input capacitor

Rated voltage of input capacitor must be higher than the maximum input voltage. Also rated ripple-current of the capacitor must be higher than the maximum input ripple-current of the IC.

Although the average value of an input current becomes smaller in proportion to the transformation ratio, momentarily the same current equal to output current flows through the buck converter as shown as I_{DD} in Figure 2.

This will be averaged by the input capacitor, but as it is clearly shown as I_{CIN} of Figure 2, the alternating ripple-current flowing in the input capacitor, is higher than I_{CO} of the output.

Effective value of I_{CIN} can be calculated by following equation:

$$I_{CIN} = \sqrt{\frac{V_{OUT}}{V_{IN(MIN)}} \left\{ I_O^2 \left(1 - \frac{V_{OUT}}{V_{IN(MIN)}} \right) + \frac{1}{12} \Delta I_L^2 \right\}} \quad [A_{RMS}] \quad (1)$$

Figure 3 shows the ripple heat generation characteristics of a ceramic capacitor (by Murata Manufacturing Co.). Whether it can be used as input capacitor or not is decided by this graph and the absolute maximum rating of ripple-current.

Be well aware of the temperature and DC bias impressed to the capacitor when using ceramic capacitor.

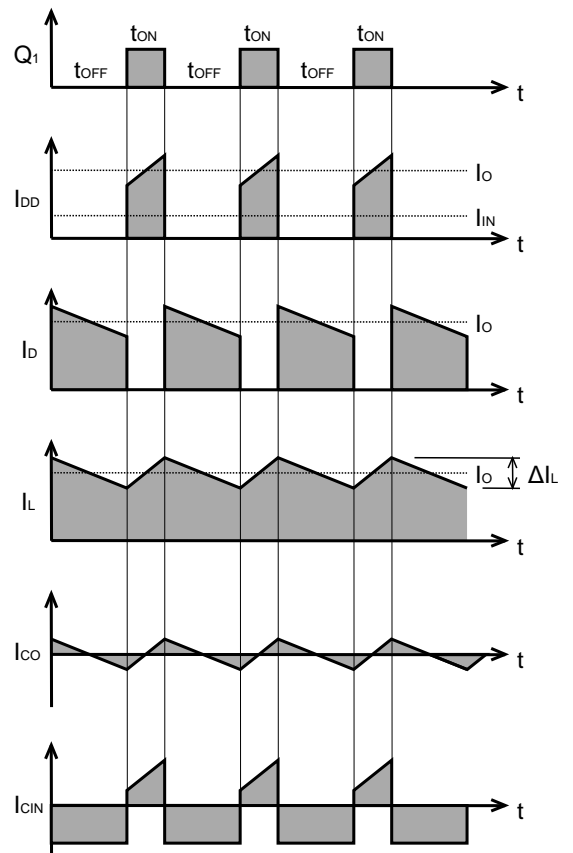


Figure 2. Current waveform of each part

Change of capacitance value due to temperature can obtain stable temperature characteristic by using high permittivity ceramic capacitor with the characteristics of X5R and X7R.

Capacitance value reduces when DC bias at both sides of ceramic capacitor increases. Figure 4 shows the DC bias characteristics (by Murata Manufacturing Co.).

Example: Characteristic of Ceramic Capacitor (make: Murata Manufacturing Co.)

GRM32ER7YA106KA12 10μF±10%, 35V, X7R

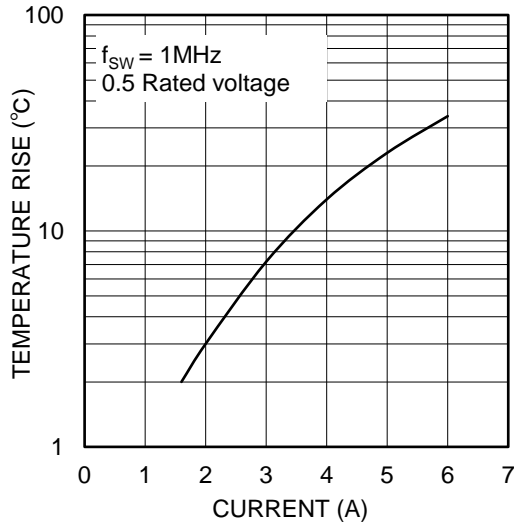


Figure 3. Ripple heat generation characteristic

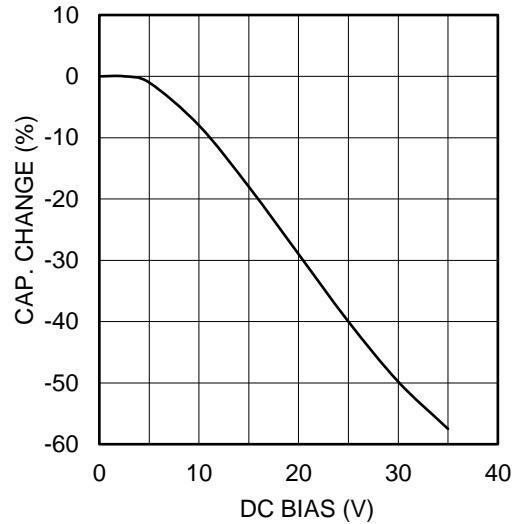


Figure 4. DC bias characteristic

Input ripple voltage of regulator is decided by the value of input capacitance. Input ripple voltage ΔV_{IN} can be calculated by the following equation.

$$\Delta V_{IN} = \frac{\left(1 - \frac{V_{OUT}}{V_{IN}}\right) \times I_{O(MAX)} \times V_{OUT}}{C_{IN} \times f_{SW} \times V_{IN}} + \left(1 - \frac{V_{OUT}}{V_{IN}}\right) \times I_{O(MAX)} \times ESR_{MAX} \quad [V_{P-P}] \quad (2)$$

- V_{IN} : Input voltage [V]
- V_{OUT} : Output voltage [V]
- $I_{O(MAX)}$: Maximum load current [A]
- C_{IN} : Input capacitor [F]
- f_{SW} : Switching frequency [Hz]
- ESR_{MAX} : Maximum equivalent series resistance ESR [Ω] of input capacitor

Calculation example of input capacitor

For this design example, parameters listed in Table1 will be used. As for the input capacitor, Murata Manufacturing Co. make 10μF / 35V ceramic capacitor is considered for reference.

Parameter	Value
Input voltage range V_{IN}	7V to 28V
Output voltage V_{OUT}	3.3V
Input ripple voltage ΔV_{IN}	300mV
Output ripple voltage ΔV_o	33mV (1% of output voltage)
Output rating current I_o	3A
Inductor ripple current ΔI_L	0.9A (30% of output rating current)
Operation frequency f_{sw}	1MHz

Table1. Design parameter

Calculate input ripple current by substituting each parameter to the equation (1).

$$I_{CIN} = \sqrt{\frac{V_{OUT}}{V_{IN(MIN)}} \left\{ I_o^2 \left(1 - \frac{V_{OUT}}{V_{IN(MIN)}} \right) + \frac{1}{12} \Delta I_L^2 \right\}} = \sqrt{\frac{3.3}{7} \left\{ 3^2 \left(1 - \frac{3.3}{7} \right) + \frac{1}{12} \times 0.9^2 \right\}} = 1.508 \text{ [ARMS]} \quad (3)$$

From Figure 3 ripple current capacitance obtains enough margins.

Next, calculate input ripple voltage by substituting each parameter to equation (2). At this point consideration for DC bias characteristic of ceramic capacitor is necessary. In this example, since the maximum voltage impressed to capacitor is 28V, 48% will be reduced from rating capacitance value as from Figure 4. Also, ESR of ceramic capacitor is 2mΩ.

$$\begin{aligned} \Delta V_{IN} &= \frac{\left(1 - \frac{V_{OUT}}{V_{IN}} \right) \times I_{O(MAX)} \times V_{OUT}}{C_{IN} \times f_{SW} \times V_{IN}} + \left(1 - \frac{V_{OUT}}{V_{IN}} \right) \times I_{O(MAX)} \times ESR_{MAX} \text{ [V}_{P-P}\text{]} \\ &= \frac{\left(1 - \frac{3.3}{28} \right) \times 3 \times 3.3}{(10 \times 10^{-6} \times 0.52) \times 1 \times 10^6 \times 7} + \left(1 - \frac{3.3}{28} \right) \times (3 \times 2 \times 10^{-3}) = 65.3 \text{ [mV}_{P-P}\text{]} \end{aligned} \quad (4)$$

Ripple voltage of minimum input voltage can be shown as below method.

$$\Delta V_{IN} = \frac{\left(1 - \frac{3.3}{7} \right) \times 3 \times 3.3}{(10 \times 10^{-6} \times 0.96) \times 1 \times 10^6 \times 7} + \left(1 - \frac{3.3}{7} \right) \times (3 \times 2 \times 10^{-3}) = 81.0 \text{ [mV}_{P-P}\text{]} \quad (5)$$

The design requirement for input ripple voltage below 300mV can be confirmed. Maximum voltage at both ends of input capacitor is $V_{IN(MAX)} + \Delta V_{IN}/2$. To obtain more voltage margins, give consideration of using two 4.7μF / 50V capacitors in parallel. Also, be cautious for actual input ripple voltage that may get higher than the calculated value, due to output impedance of the voltage source (preceding circuit) and parasitic component resulting from the PCB layout.

Calculation of output capacitor

Important elements in designing output capacitor are rating voltage, ripple rating current, and ESR (equivalent series resistance). Ripple current and voltage impressed to the capacitor must be less than the maximum rating. ESR is an important element to decide the output ripple voltage with the inductor current.

The effective value of ripple current, the alternating component included in the output current, can be calculated by the following equation as it is a triangular waveform like I_{CO} of Figure 2.

$$I_{CO} = \frac{1}{\sqrt{12}} \times \frac{V_{OUT}(V_{IN(MAX)} - V_{OUT})}{L \times f_{SW} \times V_{IN(MAX)}} \quad [\text{ARMS}] \quad (6)$$

$V_{IN(MAX)}$: Maximum input voltage [V]

V_{OUT} : Output voltage [V]

L : Inductor value [H]

f_{SW} : Switching frequency [Hz]

Output ripple voltage is the composite waveform created by the ripple current of the inductor flowing through the output capacitor depending on electrostatic capacitance, ESR, and ESL. It can be calculated by the following equation.

$$\Delta V_{ORPL} = \Delta I_L \left(\frac{1}{8 \times C_O \times f_{SW}} + ESR \right) + ESL \frac{V_{IN(MAX)}}{L} \quad [V_{P-P}] \quad (7)$$

$V_{IN(MAX)}$: Maximum input voltage [V]

ΔI_L : Inductor ripple current [A]

C_O : Output capacitor [F]

L : Inductor value [H]

f_{SW} : Switching frequency [Hz]

ESR: Equivalent series resistor of output capacitor [Ω]

ESL: Equivalent series inductor of output capacitor [H]

When using leaded type aluminum electrolytic capacitor with high ESR and ESL as an output capacitor, notice that ripple by ESR and ESL may get bigger than the ripple by capacitance.

Calculation example of output capacitor

For this design example, parameters listed in Table 1 will be used. As for the input capacitor, Murata Manufacturing Co. make 22μF / 25V ceramic capacitor is considered as reference. Calculate ripple current by substituting each parameter to equation (6). Use 4.7μH value for coil L.

$$I_{CO} = \frac{1}{\sqrt{12}} \times \frac{V_{OUT}(V_{IN(MAX)}-V_{OUT})}{L \times f_{SW} \times V_{IN(MAX)}} = \frac{1}{\sqrt{12}} \times \frac{3.3(28-3.3)}{4.7 \times 10^{-6} \times 1 \times 10^6 \times 28} = 0.18 \text{ [A}_{RMS}] \tag{8}$$

From Figure 5 ripple current capacitance obtains enough margin.

Next, calculate output ripple voltage by substituting each parameter to equation (7). At this point consideration for DC bias characteristic of ceramic capacitor is necessary. In this example, because the voltage impressed to capacitor is 3.3V, 2% will be reduced from rating capacitance value as in Figure 6. Also, ESR of ceramic capacitor is 2mΩ and ESL is 0.4nH.

$$\begin{aligned} \Delta V_{ORPL} &= \Delta I_L \left(\frac{1}{8 \times C_O \times f_{SW}} + ESR \right) + ESL \frac{V_{IN(MAX)}}{L} \\ &= 0.9 \left(\frac{1}{8 \times (22 \times 10^{-6} \times 0.98) \times 1 \times 10^6} + 2 \times 10^{-3} \right) + 0.4 \times 10^{-9} \left(\frac{28}{4.7 \times 10^{-6}} \right) = 9.4 \text{ [mV}_{P-P}] \end{aligned} \tag{9}$$

Output ripple voltage requirement is 33mV, meaning that the above value satisfies. But, the actual output ripple voltage can be influenced by ESR, ESL elements of capacitor and by parasitic element originated in PCB layout, causing difference from the calculated value.

Example: Characteristic of Ceramic Capacitor (make: Murata Manufacturing Co.)

GRM32ER71E226ME15 22μF±20%, 25V, X7R

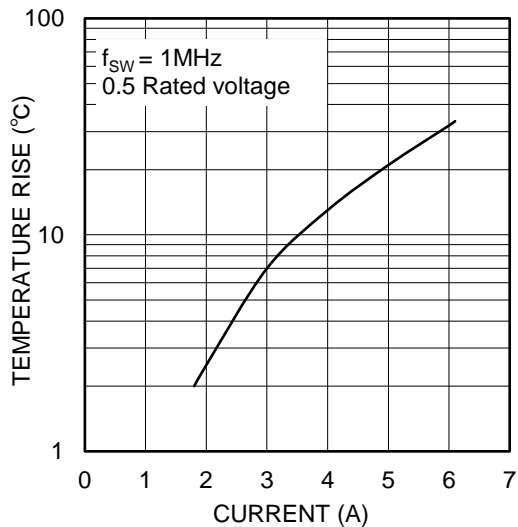


Figure 5. Ripple heat generation characteristic

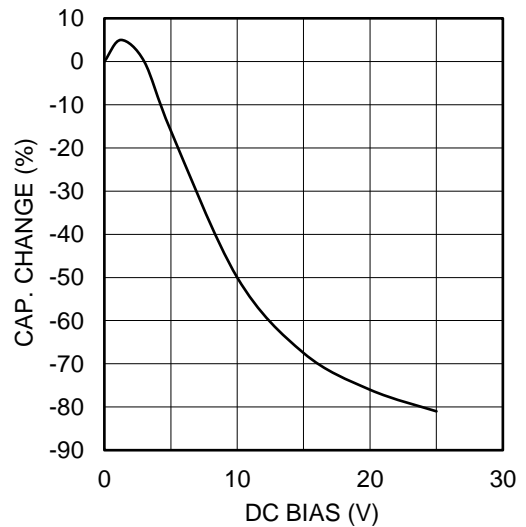


Figure 6. DC bias characteristic

Equation of buck converter

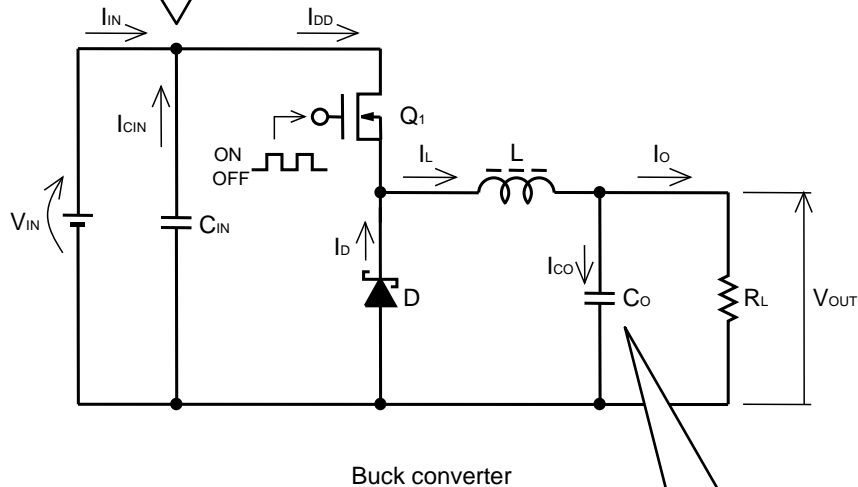
• Effective value of ripple current flowing in input capacitor

$$I_{CIN} = \sqrt{\frac{V_{OUT}}{V_{IN(MIN)}} \left\{ I_O^2 \left(1 - \frac{V_{OUT}}{V_{IN(MIN)}} \right) + \frac{1}{12} \Delta I_L^2 \right\}} \quad [A_{RMS}]$$

• Input ripple voltage

$$\Delta V_{IN} = \frac{\left(1 - \frac{V_{OUT}}{V_{IN}} \right) \times I_{O(MAX)} \times V_{OUT}}{C_{IN} \times f_{SW} \times V_{IN}} + \left(1 - \frac{V_{OUT}}{V_{IN}} \right) \times I_{O(MAX)} \times ESR_{MAX} \quad [V_{P-P}]$$

V_{IN} : Input voltage [V]
 $V_{IN(MIN)}$: Minimum input voltage [V]
 V_{OUT} : Output voltage [V]
 I_O : Output rating current [A]
 ΔI_O : Inductor ripple current [A]
 (Usually set between 20% and 50% of I_O)
 $I_{O(MAX)}$: Maximum load current [A]
 C_{IN} : Input capacitor [F]
 f_{SW} : Switching frequency [Hz]
 ESR_{MAX} : Maximum equivalent series resistance of Input capacitor [Ω]



Buck converter

• Effective value of ripple current flowing in output capacitor

$$I_{CO} = \frac{1}{\sqrt{12}} \times \frac{V_{OUT}(V_{IN(MAX)} - V_{OUT})}{L \times f_{SW} \times V_{IN(MAX)}} \quad [A_{RMS}]$$

• Output ripple voltage

$$\Delta V_{ORPL} = \Delta I_L \left(\frac{1}{8 \times C_O \times f_{SW}} + ESR \right) + ESL \frac{V_{IN(MAX)}}{L} \quad [V_{P-P}]$$

$V_{IN(MAX)}$: Maximum input voltage [V]
 V_{OUT} : Output voltage [V]
 L : Inductor value [H]
 f_{SW} : Switching frequency [Hz]
 ΔI_L : Inductor ripple current [A]
 (Usually set between 20% and 50% of I_O)
 C_O : Output capacitor [F]
 ESR : Equivalent series resistance of output capacitor [Ω]
 ESL : Equivalent series inductance of output capacitor [H]

Notes

- 1) The information contained herein is subject to change without notice.
- 2) Before you use our Products, please contact our sales representative and verify the latest specifications :
- 3) Although ROHM is continuously working to improve product reliability and quality, semiconductors can break down and malfunction due to various factors.
Therefore, in order to prevent personal injury or fire arising from failure, please take safety measures such as complying with the derating characteristics, implementing redundant and fire prevention designs, and utilizing backups and fail-safe procedures. ROHM shall have no responsibility for any damages arising out of the use of our Products beyond the rating specified by ROHM.
- 4) Examples of application circuits, circuit constants and any other information contained herein are provided only to illustrate the standard usage and operations of the Products. The peripheral conditions must be taken into account when designing circuits for mass production.
- 5) The technical information specified herein is intended only to show the typical functions of and examples of application circuits for the Products. ROHM does not grant you, explicitly or implicitly, any license to use or exercise intellectual property or other rights held by ROHM or any other parties. ROHM shall have no responsibility whatsoever for any dispute arising out of the use of such technical information.
- 6) The Products specified in this document are not designed to be radiation tolerant.
- 7) For use of our Products in applications requiring a high degree of reliability (as exemplified below), please contact and consult with a ROHM representative : transportation equipment (i.e. cars, ships, trains), primary communication equipment, traffic lights, fire/crime prevention, safety equipment, medical systems, servers, solar cells, and power transmission systems.
- 8) Do not use our Products in applications requiring extremely high reliability, such as aerospace equipment, nuclear power control systems, and submarine repeaters.
- 9) ROHM shall have no responsibility for any damages or injury arising from non-compliance with the recommended usage conditions and specifications contained herein.
- 10) ROHM has used reasonable care to ensure the accuracy of the information contained in this document. However, ROHM does not warrants that such information is error-free, and ROHM shall have no responsibility for any damages arising from any inaccuracy or misprint of such information.
- 11) Please use the Products in accordance with any applicable environmental laws and regulations, such as the RoHS Directive. For more details, including RoHS compatibility, please contact a ROHM sales office. ROHM shall have no responsibility for any damages or losses resulting non-compliance with any applicable laws or regulations.
- 12) When providing our Products and technologies contained in this document to other countries, you must abide by the procedures and provisions stipulated in all applicable export laws and regulations, including without limitation the US Export Administration Regulations and the Foreign Exchange and Foreign Trade Act.
- 13) This document, in part or in whole, may not be reprinted or reproduced without prior consent of ROHM.



Thank you for your accessing to ROHM product informations.
More detail product informations and catalogs are available, please contact us.

ROHM Customer Support System

<http://www.rohm.com/contact/>